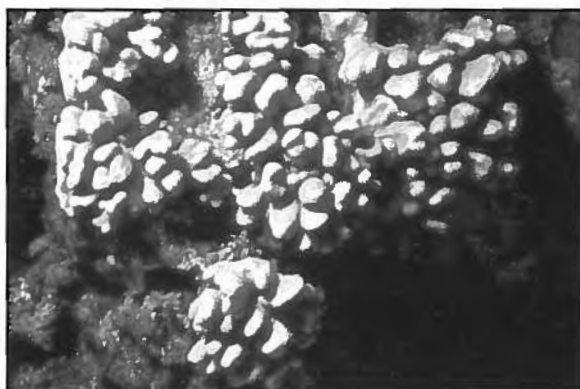


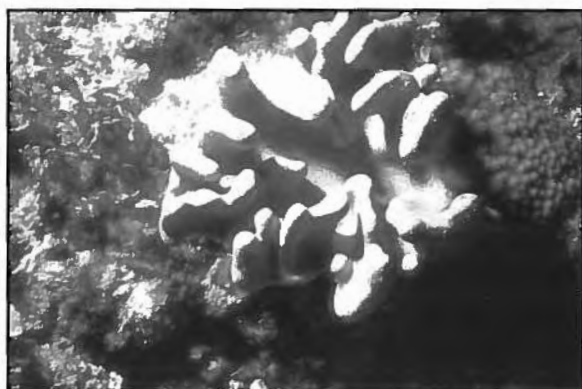
a. *Cladiella krempfi* (Hickson, 1919)
with polyps expanded.



b. *Cladiella krempfi* (Hickson, 1919)
with polyps retracted.



c. *Cladiella pachyclados* (Klunzinger, 1877).



d. *Lobophytum batarum* Moser, 1919.



e. *Lobophytum pauciflorum* (Ehrenberg, 1834).



f. *Lobophytum sarcophytoides* Moser, 1919.

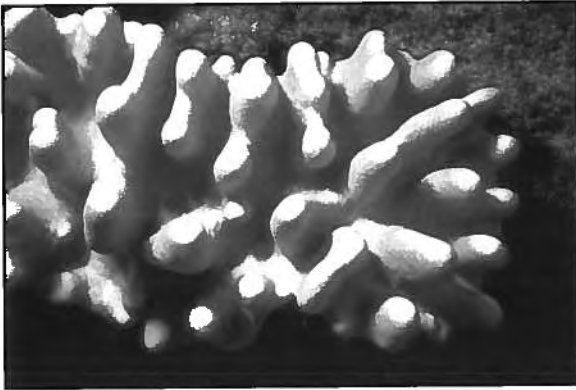
Plate I (a-f) Living soft corals of Guam.



a. *Sarcophyton glaucum* (Quoy & Gaimard, 1833).



b. *Sarcophyton trocheliophrum* von Marenzeller, 1886.



c. *Sinularia abrupta* Tixier-Durivault, 1970.



d. *Sinularia arborea* Verseveldt, 1971.



e. *Sinularia discrepans* Tixier-Durivault, 1970.



f. *Sinularia gaweli* Verseveldt, 1978.

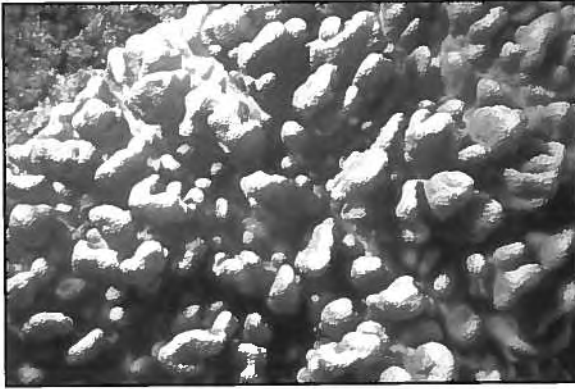
Plate II (a-f) Living soft corals of Guam.



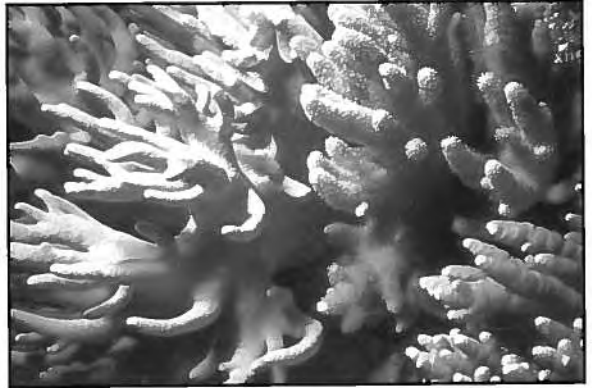
a. *Sinularia gibberosa* Tixier-Durivault, 1970.



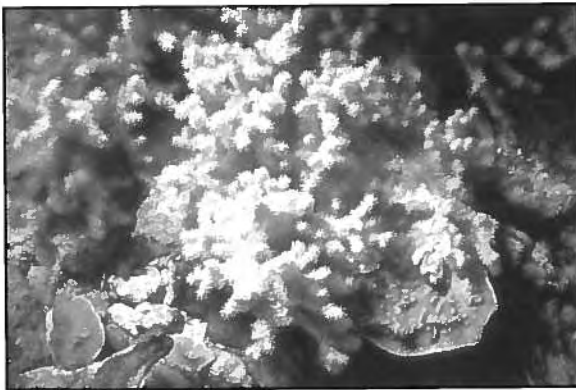
b. *Sinularia maxima* Verseveldt, 1971.



c. *Sinularia numerosa* Tixier-Durivault, 1970.



d. *Sinularia polydactyla* (Ehrenberg, 1834).



e. *Sinularia querciformis* (Pratt, 1903).



f. Aggregation of *Asterospicularia randalli* Gawel, 1976.

Plate III (a-f) Living soft corals of Guam.